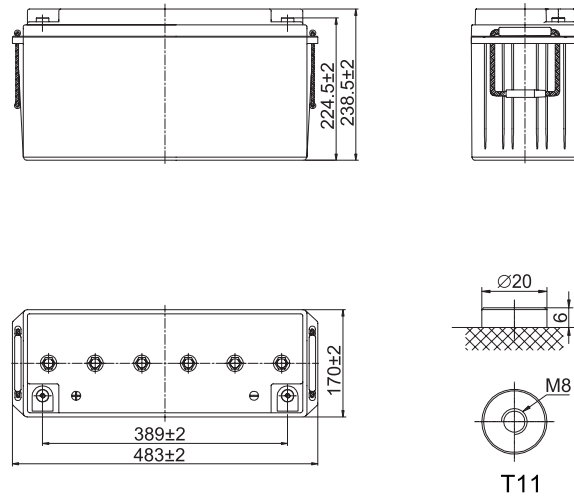


SPECIFICATIONS

Nominal voltage	12V	
Nominal capacity	150Ah at 1.80V/cell	
Dimensions	Length	483±2mm (19.0 inches)
	Width	170±2mm (6.69 inches)
	Container height	238.5±2mm (9.39 inches)
	Total height	238.5±2mm (9.39 inches)
Approx weight	43.6 Kg (96.1 lbs)	
Terminal	T11 (M8)	
Container material	ABS	
Rated capacity (25°C)	154.6Ah/7.73A	(200hr, 1.80V/cell, 25°C/77°F)
	150.0Ah/15.0A	(10hr, 1.80V/cell, 25°C/77°F)
	127.5Ah/25.5A	(5hr, 1.75V/cell, 25°C/77°F)
	110.7Ah/36.9A	(3hr, 1.75V/cell, 25°C/77°F)
	85.4Ah/85.4A	(1hr, 1.67V/cell, 25°C/77°F)
Max. discharge current	1500A (5s)	
Internal resistance	Approx 3.5mΩ	
Operating temp. range	Discharge: -20~55°C (-4~131°F)	
	Charge: 20~40°C (-4~104°F)	
	Storage: -20~50°C (-4~122°F)	
Nominal operating temp. range	25±3°C (77±5°F)	
Cycle use	Initial charging current less than 37.5A. voltage	
	14.1V~14.4V at 25°C (77°F) temp. coefficient -30mV/°C	
Standby use	Initial charging current less than 37.5A. voltage	
	13.5V~13.8V at 25°C (77°F) temp. coefficient -20mV/°C	
Capacity affected by temp.	40°C (104°F)	103%
	25°C (77°F)	100%
	0°C (32°F)	86%
Self discharge	LPGS series batteries may be stored for up to 6 months at 25°C (77°F) and then a freshening charge is required. For higher temperatures the time interval will be shorter.	



LAYOUT



CONSTANT CURRENT DISCHARGE CHARACTERISTICS (A, 25°C)

F.V/Time	5min	10min	15min	20min	30min	45min	1h	2h	3h	4h	5h	6h	8h	10h	20h
1.85V/cell	241.8	190.1	161.7	135.2	106.9	81.2	67.2	42.7	33.2	27.3	23.2	20.2	16.4	13.9	7.50
1.80V/cell	319.9	239.4	192.5	157.5	123.0	92.1	74.7	46.4	35.6	29.0	24.9	21.7	17.5	15.0	7.73
1.75V/cell	368.1	268.5	214.6	173.0	131.1	97.4	79.0	48.6	36.9	30.0	25.5	22.3	17.8	15.2	7.80
1.70V/cell	410.1	296.1	231.8	183.9	138.3	102.3	82.5	51.0	38.2	30.9	26.2	22.7	18.1	15.2	7.95
1.65V/cell	447.9	316.4	244.1	193.5	144.8	105.4	85.4	52.4	39.6	31.8	26.8	23.2	18.3	15.4	8.03
1.60V/cell	498.0	346.3	263.2	207.8	153.9	111.4	89.6	54.3	41.0	32.6	27.3	23.7	18.6	15.6	8.10

CONSTANT POWER DISCHARGE CHARACTERISTICS (Watts/Block, 25°C)

F.V/Time	5min	10min	15min	20min	30min	45min	1h	2h	3h	4h	5h	6h	8h	10h	20h
1.85V/cell	445.6	353.9	304.0	256.9	204.8	156.7	130.1	83.2	64.8	53.5	45.6	39.8	32.6	27.7	14.9
1.80V/cell	583.6	440.7	357.4	295.1	232.8	176.5	144.0	89.9	69.3	56.7	48.8	42.6	34.6	29.7	15.3
1.75V/cell	656.7	486.0	393.2	320.6	246.0	185.1	151.6	93.9	71.6	58.4	49.8	43.6	35.1	30.0	15.5
1.70V/cell	710.2	522.9	418.2	337.8	257.6	193.3	157.6	98.2	73.9	60.0	51.0	44.5	35.6	30.1	15.8
1.65V/cell	763.1	552.7	436.1	352.1	267.3	197.5	162.1	100.3	76.3	61.6	52.0	45.3	36.0	30.4	15.9
1.60V/cell	828.9	591.1	462.4	373.9	281.7	207.5	169.0	103.5	78.6	62.8	52.9	46.1	36.4	30.8	16.0

APPLICATIONS

- Communication power supply
- Engine starting
- Pump systems
- Alarm installations
- Marine and power stations

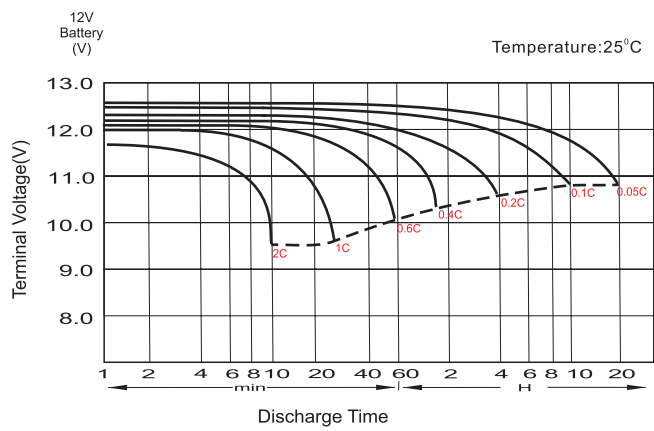
GENERAL FEATURES

- Adopted advantage AGM-GEL technology
- Operation temperature - 20~55°C
- ≤ 3% Self discharge @25°C

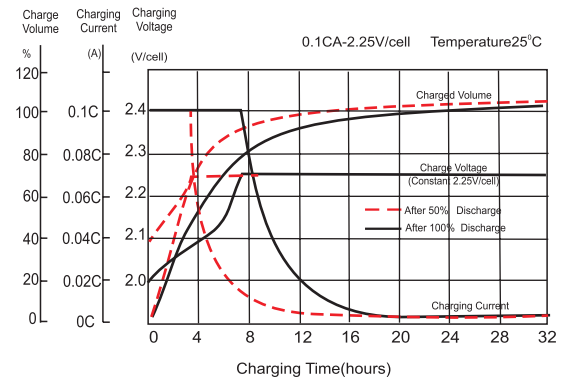
STANDARDS

- IEC 60896 Certified
- Classified as "Long Life" according to Eurobat
- UL Certified, CE Certified
- Manufactured in Leoch® IATF16949, ISO 9001, ISO 14001 and ISO 45001 certified production facilities

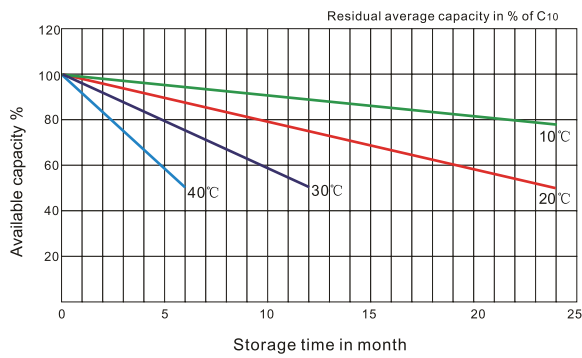
DISCHARGE CHARACTERISTICS



FLOAT CHARGING CHARACTERISTICS



GENERAL RELATION OF CAPACITY VS. STORAGE TIME



EFFECT OF TEMPERATURE ON LONG TERM FLOAT LIFE

